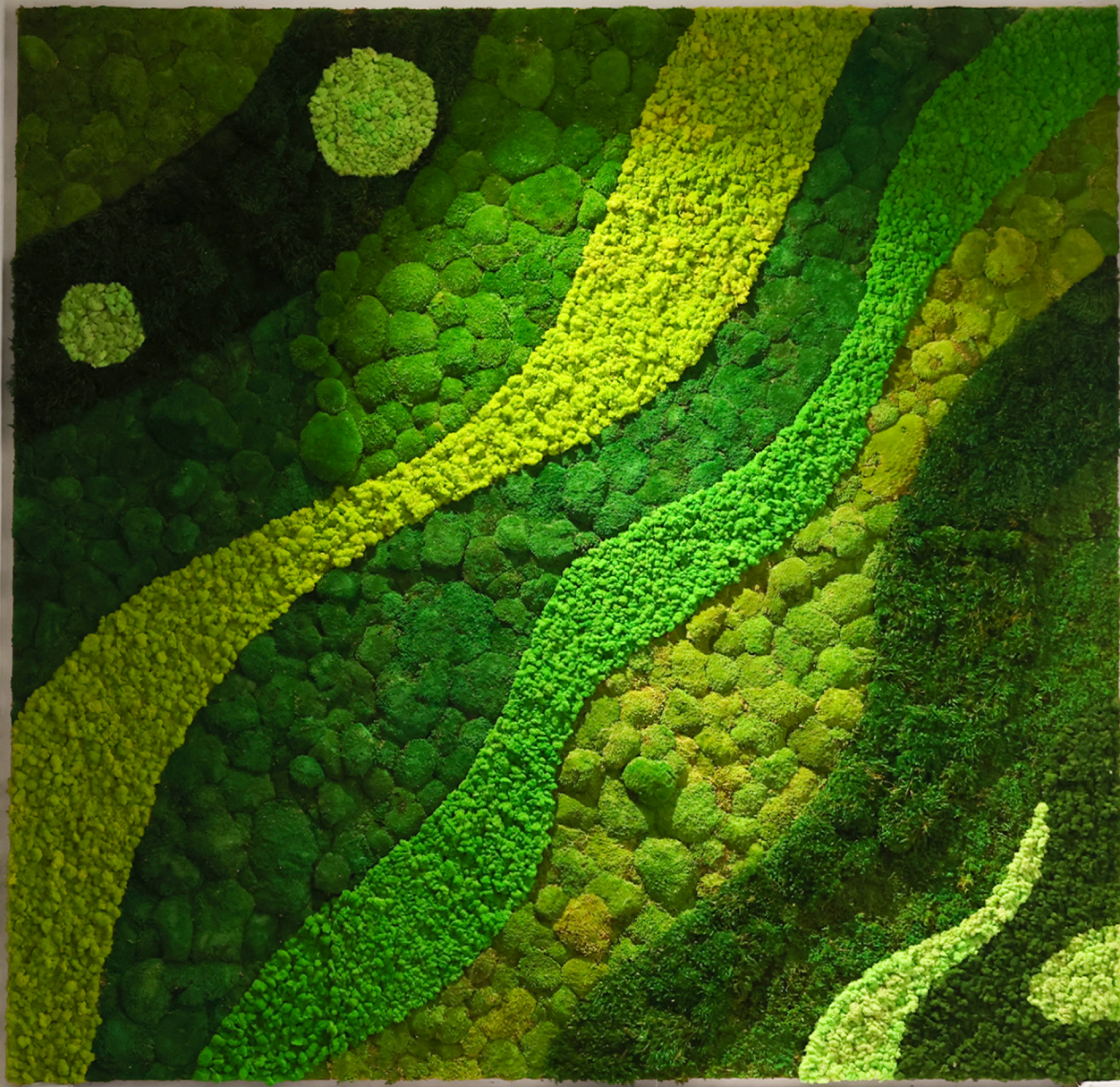


# SUSTAINABILITY PRACTICES



# Table of Contents

<b>Our Mission</b>	<b>2</b>
<b>Eco-Friendly Material Sourcing and harvesting</b>	<b>3</b>
<b>Eco-Conscious Production &amp; Natural Preservation Process</b>	<b>4</b>
<b>Sustainable Manufacturing &amp; Installation Standards</b>	<b>6</b>
<b>Responsible Packaging &amp; Logistics Transport</b>	<b>7</b>
<b>Virtual Operations for Environmental Impact</b>	<b>8</b>
<b>Our Commitment to a Sustainable Future</b>	<b>9</b>





## Our Mission

At Wildleaf, our mission to bring nature indoors transcends mere decoration – it embodies our profound commitment to sustainability and environmental responsibility. As pioneers in preserved natural material products, we meticulously weave eco-conscious practices into every facet of our operations, from thoughtful material sourcing to innovative production methods, sustainable packaging solutions, and optimized delivery systems.

Our dedication to sustainability is further strengthened by our alignment with ISO26000 social responsibility guidelines. These internationally recognized principles inspire us to continuously expand our environmental initiatives across our entire ecosystem - from implementing green initiatives in our workspaces and manufacturing facilities, to building lasting partnerships with environmentally conscious suppliers, and actively engaging in community-based environmental programs. Through this holistic approach, we strive to create harmony between indoor environments and the natural world, demonstrating that luxury and environmental stewardship can coexist beautifully.



# Eco-Friendly Material Sourcing and harvesting



Our materials are sourced exclusively from legally designated harvesting zones where natural resource collection is carefully regulated and permitted. Every piece is meticulously handpicked by skilled gatherers who employ traditional harvesting techniques, deliberately avoiding mechanical equipment that could disturb the delicate ecosystem. This gentle, manual approach ensures minimal impact on the surrounding environment and helps maintain the natural landscape's integrity.

We strictly adhere to sustainable harvesting cycles, carefully rotating collection areas to allow moss and other resources sufficient regeneration periods. This measured approach respects local ecosystems' natural rhythms, ensuring optimal recovery time between harvests. By limiting our collection volumes and maintaining extensive rest periods, we preserve the ecological balance that is essential for future generations, demonstrating our deep commitment to environmental stewardship.





## Eco-Conscious Production & Natural Preservation Process



Our commitment to environmental protection begins with our natural air-drying process. Instead of using energy-intensive and potentially polluting mechanical dryers, we allow our plants and moss to dry naturally in the shade, preserving their intrinsic qualities while minimizing environmental impact.



Every step of our preservation process employs carefully selected, environmentally friendly materials that prioritize both human health and ecological safety. We exclusively use non-toxic glycerin as our primary preservation agent, complemented by food-grade dyes that meet strict safety standards. This rigorous ingredient selection ensures our preserved moss remains free from harmful chemicals and unnecessary additives while maintaining its natural beauty.



We maintain stringent waste management protocols throughout our production process, effectively controlling emissions and waste discharge. This comprehensive approach not only guarantees that our final products are safe and non-toxic, but also ensures our entire manufacturing process remains environmentally responsible with minimal ecological impact.



# Sustainable Manufacturing & Installation Standards



In our moss wall and other products production process, we strictly adhere to EPA (Environmental Protection Agency) guidelines and LEED (Leadership in Energy and Environmental Design) standards for sustainable manufacturing. Our backing materials are carefully selected to minimize environmental impact - we primarily use recycled PET materials that meet ASTM D7611 recycling standards, and FSC (Forest Stewardship Council) certified wood products that ensure responsible forest management.

The final assembly of our moss walls exemplifies our commitment to full-cycle sustainability. By integrating these environmentally certified materials with our preserved moss, we create finished products that are not only beautiful but also environmentally responsible throughout their entire lifecycle. Every moss wall we install represents our dedication to sustainable practices, from initial material sourcing to final installation.







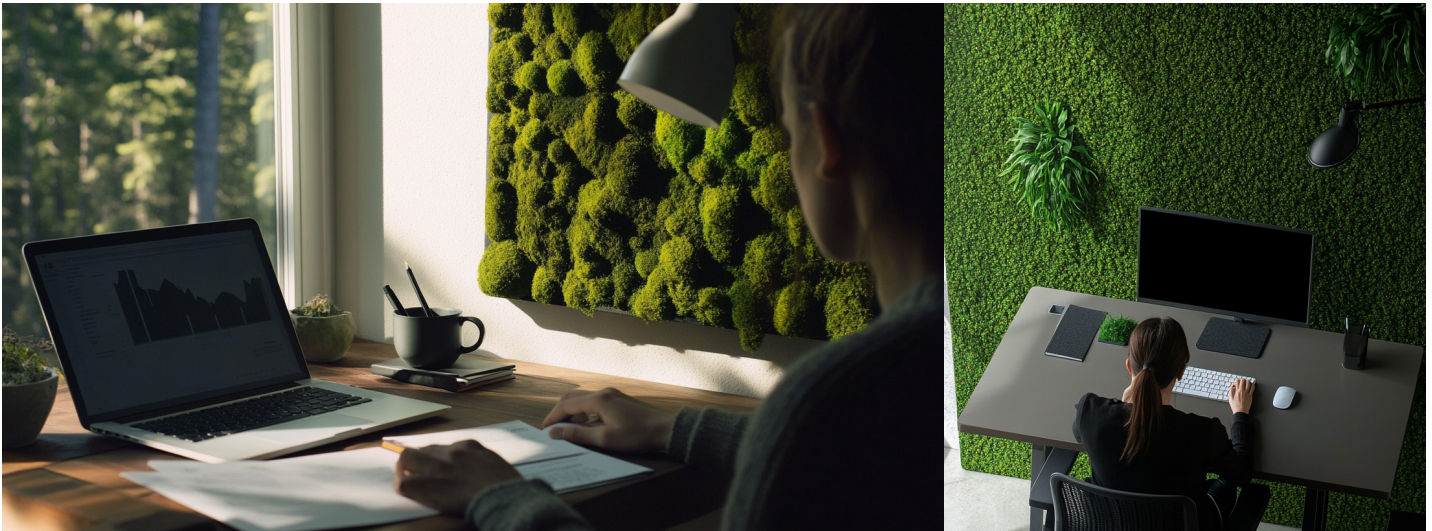
## Responsible Packaging & Logistics Transport

Our commitment to environmental responsibility extends to every aspect of our packaging strategy. All our packing materials are made from biodegradable and renewable resources, carefully selected to minimize environmental impact. From protective wrappings to shipping containers, we exclusively use materials sourced from recycled content that can be easily recycled or naturally decomposed.

Throughout our supply chain, we implement a comprehensive reuse program to maximize the lifecycle of packaging materials. This systematic approach not only reduces waste but also optimizes resource efficiency. By continuously evaluating and improving our packaging methods, we ensure that our products reach our clients safely while maintaining our dedication to environmental stewardship.



# Virtual Operations for Environmental Impact



At Wildleaf, we've adopted a comprehensive virtual work model for all departments except our essential production teams. This strategic approach to remote operations significantly reduces the carbon emissions typically associated with daily commuting and business travel. By embracing digital collaboration tools and virtual meeting platforms, our teams maintain high efficiency while eliminating the environmental impact of traditional office commutes.

This virtual-first policy extends beyond carbon reduction - it actively prevents the resource waste inherent in traditional office environments, such as excessive energy consumption, paper usage, and office supply waste. Our production facilities remain the only physical workplace, ensuring necessary quality control while maximizing our contribution to environmental preservation through reduced organizational carbon footprint.





# Our Commitment to a Sustainable Future

Through our comprehensive environmental initiatives and steadfast commitment to responsible practices, we strive to be more than just a provider of natural decor - we aim to be a catalyst for positive environmental change. Our efforts in sustainable harvesting, eco-conscious production, and responsible operations reflect our deep understanding that every business decision impacts our planet's future.

By seamlessly integrating sustainability into every aspect of our business - from our design philosophy to our daily operations - Wildleaf demonstrates that commercial success and environmental stewardship can work in harmony. We believe that bringing nature indoors should never come at the expense of our environment. Instead, it should serve as a reminder of our collective responsibility to preserve and protect our planet's natural beauty for generations to come. This is not just our business practice - it's our promise to our planet and our commitment to a greener, more sustainable future for all.







For more information, contact us:

Email: [contact@wildleaf.design](mailto:contact@wildleaf.design)

Phone: 617-212-7626

Website: <http://www.wildleaf.design>

Address: 361 Newbury Street, 5th floor#9184, Boston, MA, 02453